

LSoft Technologies Inc.



User Guide

Version Number 3.0



ZDelete v.3.0 Copyright(c) 1998-2002 LSoft Technologies Inc.

All rights reserved.

END-USER LICENSE AGREEMENT

IMPORTANT-READ CAREFULLY: This End-User License Agreement ("EULA") is a legal agreement between you (either an individual or a single entity) and The LSoft Technologies Inc. for the ZDelete v.3.0 later referred to as 'SOFTWARE'. By installing, copying, or otherwise using the SOFTWARE, you agree to be bound by the terms of this EULA. If you do not agree to the terms of this EULA, do not install or use the SOFTWARE.

WE REQUIRE ALL OUR DEALERS TO PROVIDE EACH PURCHASER WITH 30-DAYS EVALUATION COPY OF THE SOFTWARE TO GET A FULL UNDERSTANDING OF THE CAPABILITIES AND THE EASE OF USE OF THE SOFTWARE. OUR DEALERS HAD TO RECOMMEND YOU TO DOWNLOAD DEMO. WE WON'T ISSUE ANY REFUNDS AFTER PURCHASING FULL VERSION OF THE SOFTWARE.

LSoft Technologies Inc. may have patents, patent applications, trademarks, copyrights, or other intellectual property rights covering subject matter in this document. The furnishing of this document does not give you any license to these patents, trademarks, copyrights, or other intellectual property.

SOFTWARE LICENSE

Copyright laws and international copyright treaties, as well as other intellectual property laws and treaties protect the SOFTWARE. The SOFTWARE is licensed, not sold.

1. GRANT OF LICENSE. This EULA grants you the following rights:

- You may install and use one copy of the SOFTWARE, or any prior version, on a single computer.
- You may use full-featured version within 30 days free of charge on evaluation basis.
- To use it after 30-day evaluation period you must pay registration fee for the license.
- A license for the SOFTWARE may not be shared or used concurrently on different computers.

2. DESCRIPTION OF OTHER RIGHTS AND LIMITATIONS.

- Limitations on Reverse Engineering, Recompilation, Disassembly, Modify, Translate SOFTWARE, Make any attempt to discover the source code of the SOFTWARE.
- Rental. You may not rent, lease, or lend the SOFTWARE.

3. DISCLAIMER OF WARRANTY.

THIS SOFTWARE AND THE ACCOMPANYING FILES ARE SOLD "AS IS"
AND WITHOUT WARRANTIES AS TO PERFORMANCE OR MERCHANTABILITY
OR ANY OTHER WARRANTIES WHETHER EXPRESSED OR IMPLIED.
YOU USE THE SOFTWARE AT YOUR OWN RISK.

NO LIABILITY FOR CONSEQUENTIAL DAMAGES. To the maximum extent permitted by applicable law, in no event shall The LSoft Technologies Inc. or its suppliers be liable for any special, incidental, indirect, or consequential damages whatsoever (including, without limitation, damages for loss of business profits, business interruption, loss of business information, or any other pecuniary loss) arising out of the use of or inability to use this SOFTWARE, even if LSoft Technologies Inc. has been advised of the possibility of such damages. In any case, The LSoft Technologies Inc. entire liability under any provision of this EULA shall be limited EXCLUSIVELY TO PRODUCT REPLACEMENT.

[LSoft Technologies Inc.](#) reserves all rights not expressly granted here.

Contents

INTRODUCTION

Overview of ZDelete	1
Features of ZDelete	1
Purpose of ZDelete	2
Key Components	2

ZDELETE WIZARD

Overview	3
What ZDelete Removes	3
Step 1: Welcome	4
Step 2: Auto-Cleaner - System Folders	5
Step 3: Auto-Cleaner - Custom Items	8
Step 4: Auto-Cleaner - Disk Wiper	10
Step 5: ZDelete Options	12

ZDELETE AUTO-CLEANER AND DISK WIPER

ZDelete Auto-Cleaner Basics	15
How To Use ZDelete Auto-Cleaner	15
Scheduling ZDelete Auto-Cleaner	16
Regarding the CLEAR Parameter	17
ZDelete Disk Wiper Basics	18
Using ZDelete Disk Wiper	18

ZDELETE FOR WINDOWS EXPLORER AND DOS CONSOLE APPLICATION

ZDelete for Windows Explorer Basics	21
Using ZDelete for Windows Explorer	22
ZDelete Console Application Basics	23
Supported Commands	24
Using ZDelete Console Application	25

ZDELETE CONSOLE APPLICATION

ZDelete Console Application Basics	27
Supported Commands	28
Using ZDelete Console Application	29

LICENSING ZDELETE

Licensing Policy	31
Windows Licensing Method	31

ZDELETE FREQUENTLY ASKED QUESTIONS

Standards Used in This Guide

The following standards are used to provide more concise documentation:

Table 1 User Input

Description	Example	Action
Bold text within square brackets.	Press [Enter]. Press [Y]	Press the key on the keyboard that corresponds to the message within square brackets.
Bold text and operand within square brackets.	Press [Ctrl + B]	Together, press the combination of keys within the square brackets.
Bold text.	Click OK	With the mouse pointer, find the icon or button indicated and left-click that icon.

1

INTRODUCTION

This chapter gives an overview of the **ZDelete** application.

Overview of ZDelete

ZDelete is designed to help protect your privacy by deleting files in such a way as to prevent other people from recovering your private data after deletion. ZDelete is a data cleanup and erase utility that can delete selected folders, groups of files, Internet cache, history, cookies, etc. without any possibility of data recovery afterward. It allows you to use the Internet without leaving any history or residual data on your hard drive. Integrated **Disk Wiper** can clear out all free space on a hard disk so that recovery of deleted files becomes impossible.

ZDelete conforms to **US Department of Defense** clearing and sanitizing standard **DoD 5220.22-M**. You can be confident that once your confidential files are destroyed with this secure deletion utility, sensitive information is eliminated forever. It is a powerful and flexible data shredder for information that must be permanently directed away from the hard drive. For safety and convenience, ZDelete provides a preview of the list of planned cleanup paths before engaging the process.

Features of ZDelete

Below is a list of main features for ZDelete:

- **Graphical User Interface** integrated with **Windows Explorer** and **Microsoft Internet Explorer**.
- Windows **Drag-and-Drop** and **Hotkey** functionality.
- Functions reside in context **command menus**.
- Clear Internet system folders, Internet cookies and Internet cache.
- **ZDelete Can icon** - Similar in operation to **Windows Recycle Bin** but different in purpose. Where the Recycle Bin provides a place to easily recover deleted files, ZDelete Can securely removes data forever.
- A custom profile can be defined for the **Auto-Cleaner** feature. All defined hard drive folders and files can be cleaned up all at once with just one click.
- With **ZDelete Wizard** you can easily configure **Auto-Cleaner** to run automatically at a specified time using the standard **Microsoft Windows Task Scheduler**.
- The program supports custom configuration of all options; e.g. the number of passes for data sweeping.

Purpose of ZDelete With today's sophisticated data recovery utilities, confidentiality of deleted files is questionable with existing Windows **Delete**, **Empty Recycle Bin**, **Clear History** and **Delete Temporary Internet Files** commands. An intruder using a low-level disk editor or one of many recovery tools (for example **Restorer2000**) will find deleted files are still recoverable. Even contents of deleted files, encrypted in Windows 2000 can be recovered. The only way to make sure that deleted files are not recovered is to use a secure application that explicitly destroys the data, overwriting and replacing hard drive surface with random data as the Department of Defense recommends in **DoD 5220.22-M / NISPOM 8-306**. ZDelete is designed to be such a security tool and conforms to these structured standards.

ZDelete can conveniently take the place of standard delete commands in Windows 95, Windows 98, Windows ME, Windows NT, Windows 2000 on any file system (FAT, FAT32, NTFS or NTFS5). **ZDelete** removes any possibility of unwanted file access or tracing of deleted data history and eliminates any chance of success for those using restored information against the owner's will.

Key Components The table below lists key components of the utility:

Table 1-1 ZDelete Key Components

Component Name	Description
ZDelete Wizard	Configure custom profile for Auto-Cleaner, Disk Wiper and utility options. Also select custom items for removal.
ZDelete Auto-Cleaner	Select standard system folders in various locations to be scrubbed clean by deleting and removing temporary files and recent history files.
ZDelete Disk Wiper	Wipe all hard drive free space, making it impossible to recover previously deleted files from residual data.
ZDelete for Windows Explorer	For users who prefer the Windows Graphical User Interface (GUI) this feature allows the execution of any ZDelete commands from within Windows Explorer. Select the file or group of items, right-click and select a ZDelete command from the context menu. Alternately, drag and drop files onto the ZDelete Can icon on the Desktop.
ZDelete Console Application	For users who prefer command line access to administration functions, ZDelete commands can be executed individually from the DOS command prompt console - with or without parameters.

2

ZDELETE WIZARD

This chapter describes the functions of the **ZDelete Wizard**.

Overview

ZDelete Wizard is designed to help configure a custom item-removal profile for **Auto-Cleaner**, **Disk Wiper** and utility options. Also select custom items for removal.

The **Auto-Cleaner profile** is the set of items (files, patterns, drives) chosen for cleaning when **ZDelete Auto-Cleaner** is run. Auto-Cleaner has three sections:

- System Folders
- Custom Items
- Disk Wiper

For more information on items, see description in **Step 2**, below.

ZDelete Options define common behaviors for the utility to use in all situations; for example when a command is given, you might prefer to include a confirmation screen, or to engage the command immediately without confirmation.

What ZDelete Removes

ZDelete removes specified files and folders and files and folders indicated using patterns. To make for more concise documentation, all these elements will be referred to as items. Some examples of items as Files or as Patterns are given below.

Item as File

A File is an operating system file, as defined by an absolute or a relative path.

Table 2-1 Examples of File Items

Name	Description
DOCUMENT.DOC	Without a path, indicating it is located in current directory.
C:\TEMP\DOCUMENT.DOC	Located by absolute path from the root of drive C:
.\TEMP\DOCUMENT.DOC	Located by relative path (a subfolder of the current folder).

Item as Pattern

A Pattern is a set of symbols - including system symbols - that define a system pattern (or template) for files to be selected. The Pattern can include a folder name as prefix.

Microsoft Windows system symbols for pattern-type file search include:

- Asterisk (*) - Indicates zero or any number of any characters.
- Question Mark (?) - Indicates any single character.

Table 2-2 Examples of Pattern Items

Name	Description
C:\MY FOLDER*	Indicates all files and folders located in location C:\MY FOLDER.
*.DOC	Indicates all files with DOC extension located in current directory.
C:\TEMP*.DOC	Indicates all files with DOC extension in location C:\TEMP.
C:\Program Files\New Folder*	All files located by absolute path, relative to root of drive C:
.\TEMP*.*	All files located by relative path (\TEMP as a subfolder of current folder).

Step 1: Welcome The Wizard guides you through five screens:

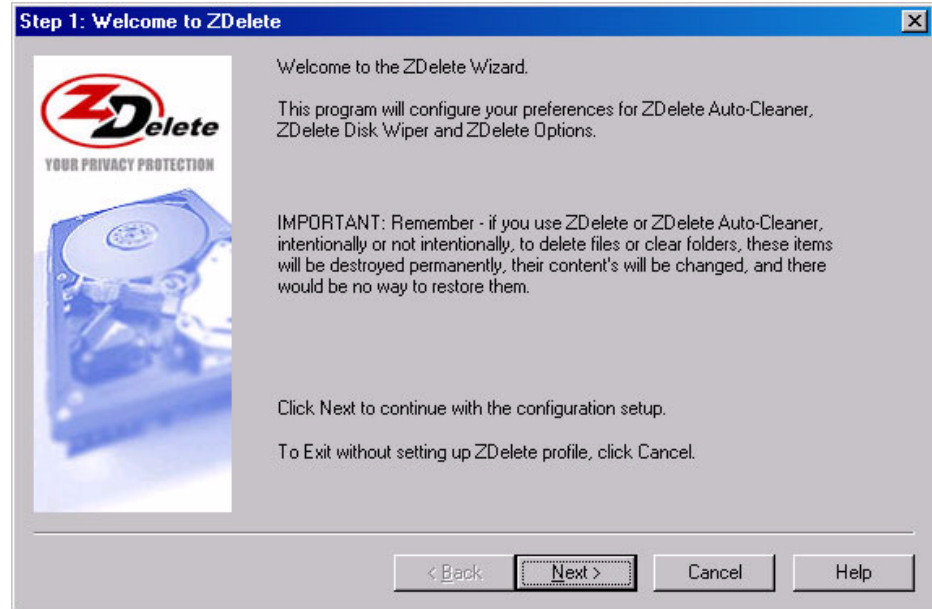
- Step 1: Welcome
- Step 2: Auto-Cleaner System Folders
- Step 3: Auto-Cleaner Custom Items
- Step 4: Auto-Cleaner Disk Wiper
- Step 5: ZDelete Options

To engage ZDelete Wizard, click the **Windows Start** button.

Click **Programs** and **ZDelete**.

Click **ZDelete Wizard**. The **Welcome** screen appears:

Figure 2-1 ZDelete Wizard Welcome Screen



The buttons at bottom of the screen are common to all five wizard screens:

Table 2-3 Common Wizard Buttons

Button	Description
Next	Move forward to the next wizard step.
Back	Move one step back to verify or change parameters already specified.
Cancel	Removes all parameters set in all wizard screens and closes the wizard without making any changes to the profile.
Finish	Appearing only in the final wizard screen, click Finish to save all parameters to your profile.
Help	Open the ZDelete online guide.

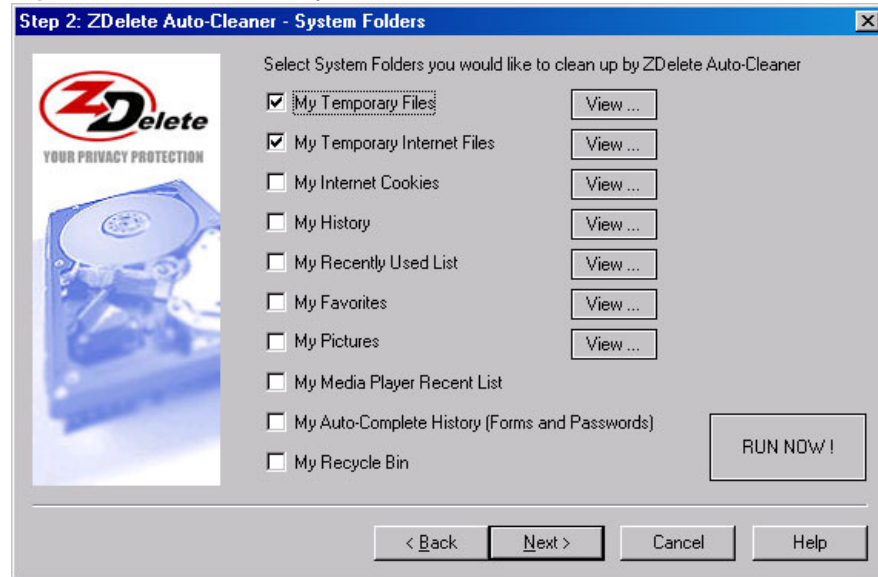
Step 2: Auto-Cleaner - System Folders

Step 2 of Wizard allows you to define **System Folders** to be cleaned up when the **ZDelete Auto-Cleaner** command is engaged.

System Folders for your profile are created and managed by the **Windows** operating system. For example when you open a Web page with graphics in **Internet Explorer**, all images from the page are placed in the folder **Temporary Internet Files**. The reason this is done is that the system assumes this page will be viewed more than once. It stores the images on the local drive so that when the page is viewed the next time, it will load up for viewing much more quickly. These images will stay on your system until you delete them manually or the operating system deletes them automatically. Anyone who gains access to your hard drive can review these images and determine which Web pages you have been viewing.

Below is an image of the **Auto-Cleaner - System Folders** screen.

Figure 2-2 Auto-Cleaner - System Folders



You can preview the contents of a selected folder content by clicking the **View** button to the right side of the folder name.

To erase selected files immediately click **RUN NOW!**

- (i) **Attention to Netscape Navigator Users:** When you install Netscape Navigator, you have an option to store Internet Cache, Cookies, Bookmarks and History in the default locations, or in a custom location, selected by you. If you choose a custom location for these folders, they will not be cleaned by ZDelete. However, you can manually specify the exact path to Netscape's Disk Cache Folder, Netscape's Cookies, History and Bookmarks files (**cookies.txt**, **netscape.hst**, **bookmark.htm**) in the **Step 3** screen of ZDelete Wizard.
- (i) **Note:** If your operating system uses a version of **Windows Shell (Shell32.dll)** prior to version 4.71, some of check boxes in Step 2 could be grayed and inaccessible. This happens because the operating system is older and does not support programmable interface to these Virtual Folders.

If this is the case, you cannot specify them for cleaning in Step 2. If you would like to clean them, one way is to add the virtual path to these folders manually in **Step 3** of ZDelete Wizard. This solves only part of the issue, however. It will not solve the issue completely because some information is left in **cache files** that are constantly used by the operating system and will result in a **use-conflict** situation. Another solution is to upgrade Windows Shell by installing a newer version of Microsoft Internet Explorer (v.4.0 or higher); it does not always solve the issue.

See also - Note on following page.

By enabling the convenient checkboxes, ZDelete searches for folder locations as defined by the operating system.

A brief description of **System Folders** follows:

Table 2-4 Description of System Folders

Name	Description
My Temporary Files	Folder where most applications store temporary files. ZDelete looks first where TMP environment variable for your profile points, then for TEMP if TMP does not exist.
My Temporary Internet Files	Folder where Internet Browser stores images and HTML pages for your profile to access them faster in the future.
My Internet Cookies	Folder where Internet Browser stores cookies for your profile. Cookies are small text files - they are like the browser's variables for interaction with a Web Server.
My History	Folder where Internet Browser and operating system store a list of recently used links.
My Recently Used Documents List	Folder where the operating system stores a list of shortcuts for recently used documents.
My Favorites	Folder where the operating system stores Favorite Links for your profile.
My Pictures	Folder with the same name where the operating system suggests that you keep your images. This feature is new in Windows 2000 and Windows ME. If it does not exist, this item will be grayed and inaccessible.
My Media Player Recent List	Place where the operating system stores a list of recently played media files and URLs.
My Auto-Complete History (Forms and Passwords)	Place where the operating system stores your history of recently typed names, links, passwords, history in search engines, etc.... If this feature is turned on in Internet Explorer, sometimes you can notice that when you start typing in the standard edit field in browser, a drop-down list appears and you can select the value from it.
My Recycle Bin	The standard Windows Recycle Bin - a virtual folder where deleted files and folders are stored until your clear or restore them. Remember: The standard Windows Empty Recycle Bin command does not actually destroy the data. It is still recoverable. Instead of using Empty Recycle Bin command, we advise you to check this option and run Auto-Cleaner to make sure that items in Recycle Bin are permanently destroyed.

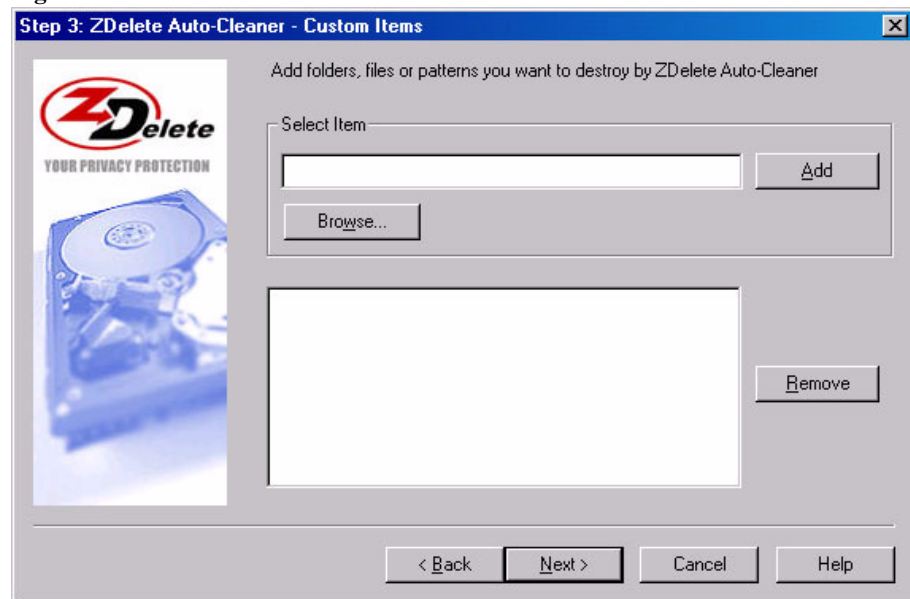
- (i) **Note:** If ZDelete tries to delete files that are in use by the operating system, it will encounter a **use-conflict** and leave the file alone. If this situation happens, an error message will be displayed on the screen. An exception to this rule - for use-conflict files in system folders, ZDelete skips the files without displaying the error message. These error messages can be found in the ZDelete log file.
- (!) **Warning:** Be careful if you decide to erase the **My Pictures** folder. All other folders on this screen keep no real documents. Rather, they store temporary files and links to files. This folder, however can be the main storage folder for important data files. After **ZDelete Auto-Cleaner** has erased the contents of this folder, there is no way to restore files.

**Step 3: Auto-Cleaner
- Custom Items**

In this step, define custom items (files and patterns) to be cleaned up when **ZDelete Auto-Cleaner** is engaged.

Below is a figure showing the screen for **Custom Items**:

Figure 2-3 Auto-Cleaner - Custom Items



Adding a Custom Item

Custom Item command behaves similar to the Microsoft standard delete (del) command in Windows. For example, using the pattern **C:\MY FOLDER*.tmp**, the following will happen:

- All files with the extension TMP will be withdrawn from the folder C:\MY FOLDER (e.g. myfile.tmp is removed).
- All subfolders with a matching suffix are ZDeleted, along with their contents whether or not the content files have the matching suffix (e.g. mysubfolder.tmp is removed).
- If there are subfolders in C:\MY FOLDER, and the folder name does not have the TMP suffix, contents will NOT be processed at all (e.g. mysubfolder is not touched).

The table below contains some examples:

Table 2-5 Example Custom Item Patterns

Pattern	ZDelete Action
C:\MY FOLDER*.DOC	All files and folders with extension DOC in C:\MY FOLDER
C:\MY DOCUMENTS\MyFile.txt	Single text file (MyFile.txt) located in C:\MY DOCUMENTS
C:\TEMP*	All files and folders located in C:\TEMP

To add a custom item for Auto-Cleaner, follow these steps:

- 1 Click **Browse...** and navigate to a folder using the standard Microsoft browse dialog box.
- 2 Click on the folder. In the **Select Item** field, the path for the selected folder will be displayed, for example:

C:\MY FOLDER*.tmp

- 3 Change the item manually, if needed. For example, to change the pattern to remove only those files ending in **ZIP**:

C:\MY FOLDER*.zip

- 4 Click **Add**. The pattern as edited appears in the **Custom Items** list box.

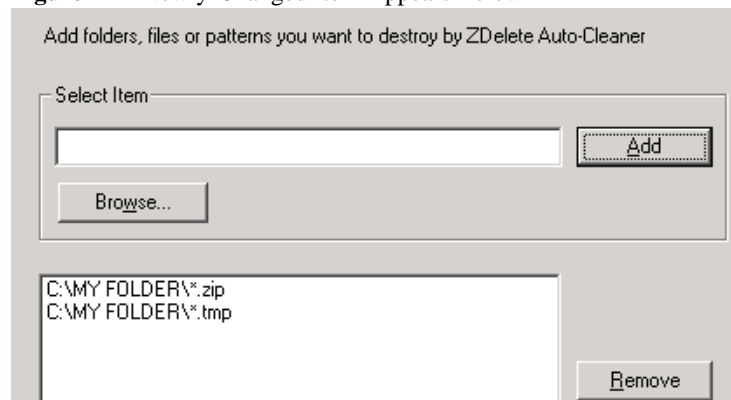
Editing a Custom Item

To edit a custom item for Auto-Cleaner, follow these steps:

Note: To add a unique pattern or file type, select the file or folder first, and then add or change symbols for the unique pattern (using asterisk(*) or question mark(?)).

- 1 Click on the item in the list box. It appears in the **Select Item** box above.
- 2 Change the item manually and click **Add**. The newly-changed item appears in the list box under the previous item.

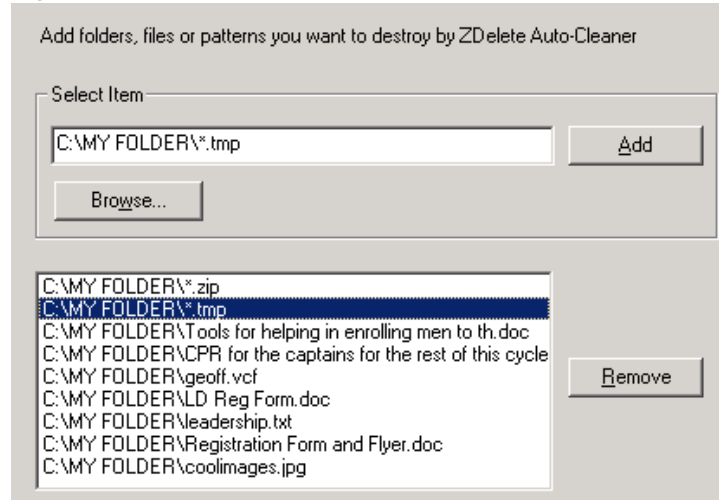
Figure 2-4 Newly-Changed Item Appears Below



Selecting Several Items

- 1 Double-click item in the list box, and standard Microsoft **File Open** dialog box appears showing the selected folder and all contents.
- 2 Select one or several files to be added to the list box. Click **Open**. All selected files appear in the **Custom Items** list box as pictured below.

Figure 2-5 Files Added to List Box



Removing Items From the List Box

To remove any item from the list box, follow these steps:

- 1 Select an item or several items. Standard Microsoft selection rules apply. For example to choose a series of items consecutively, click the top item, press **[Shift]** on the keyboard and click the bottom item. To choose several items individually, press **[Ctrl]** on the keyboard and click each item.
- 2 Once all items have been selected, click **Remove** to withdraw selected items from the list box.

Step 4: Auto-Cleaner - Disk Wiper

In this step, define a set of hard drives to be wiped when **ZDelete Auto-Cleaner** is started.

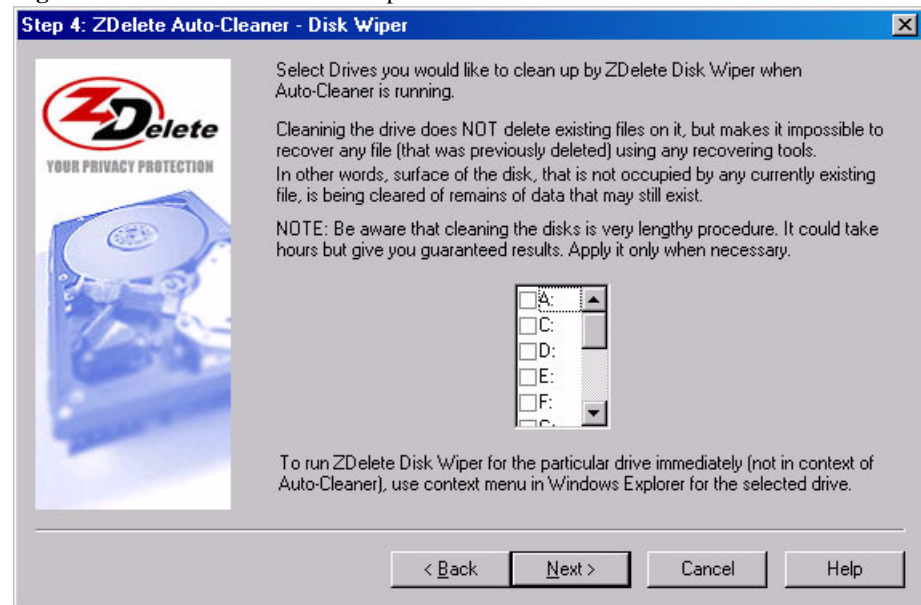
ZDelete Disk Wiper is a secure utility that will “wipe” all the free space on a drive, making it impossible to recover files that were previously deleted. **Wiping the drive does NOT delete existing files on it**, but makes it impossible to recover any file that was previously deleted, even if using recovery tools. In other words, the surface of the disk that is not occupied by any currently existing file is cleared of data residue that may still exist.

If you have been using the Windows delete command, prior to installing **ZDelete**, your drives will contain data residue from previously deleted files. These files can easily be restored by someone using a data recovery utility. If you are dealing with secure or sensitive data, it is better to run **Disk Wiper** on all drives to secure deleted files. Once this process is complete, it will be impossible for anybody to restore any document deleted before you started using **ZDelete** and your privacy will be protected.

ZDelete Disk Wiper can be used manually from a Microsoft Explorer context menu, or automatically, when you run **ZDelete Auto-Cleaner** as a scheduled task.

A figure of the **Disk Wiper** screen appears below:

Figure 2-6 Auto-Cleaner - Disk Wiper



Wiping the disk is a lengthy procedure, and does not need to be performed frequently. It is a useful feature if you have recently completed the ZDelete installation. Wiping all drives is an extra precaution that you might find useful.

Enable the checkbox next to all drives that you want to Disk Wipe.

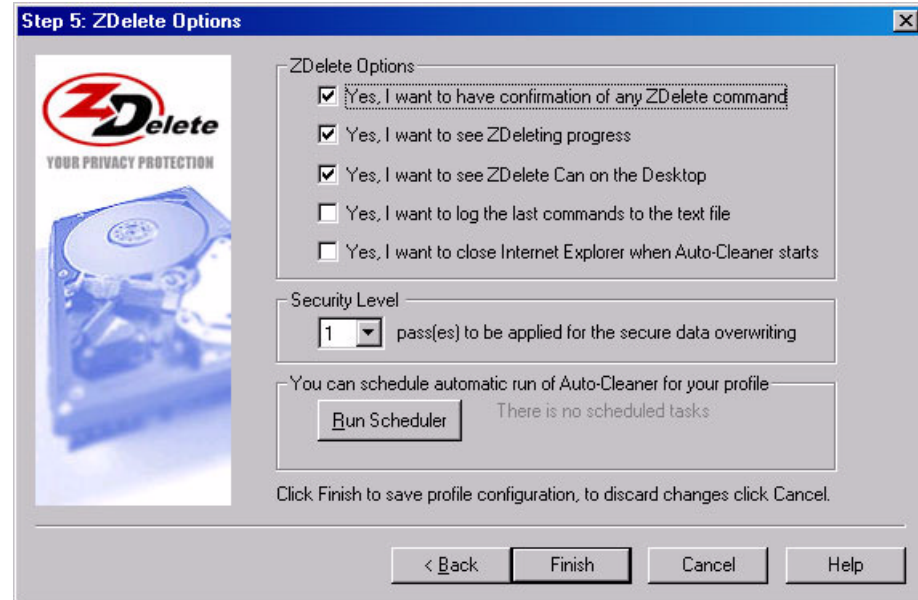
Step 5: ZDelete Options

ZDelete options affect the behavior of all utilities in ZDelete package:

- ZDelete Auto-Cleaner
- ZDelete for Windows Explorer
- ZDelete Console Application.


If your operating system supports task scheduling, you can run **Windows Task Scheduler** from this screen and create a scheduled job for ZDelete Auto-Cleaner.

Figure 2-7 ZDelete Options



The table below specifies the options:

Table 2-6 ZDelete Options

Command	Description
Confirmation of any ZDelete command	<p>When enabled, a confirmation screen appears before any ZDelete command is engaged.</p> <p>As the file removal functions of ZDelete are permanent, it is recommended that you keep this option enabled to make sure that you are aware of deleting actions as they are executed.</p>
See ZDeleting Progress	<p>After ZDeleting has begun, each file appears by name, so that you may monitor progress of the utility.</p> <p>In Windows, a standard animated dialog box appears and displays a progress bar.</p> <p>In both Windows and DOS console, the [ESC] key will cancel ZDeleting for files that have not yet been destroyed.</p> <p>It is recommended that you keep this option enabled to have the ability to cancel any ZDelete command. Without this feature, there is no way to stop the ZDelete process, other than by turning off the computer.</p> <p>(i) <i>Note: If you are using ZDelete to destroy a single small file or a set of small files, there might not be enough time for the progress dialog to appear on a screen. The command will be executed whether or not this screen appears.</i></p>
ZDelete Can on the Desktop	<p>ZDelete Can on your Desktop is a container icon where you can drop files and folders to destroy them permanently.</p>
	
Logging last commands	<p>ZDelete.log is a text file that is created by enabling this option. It will be located in the folder where you installed software.</p> <p>When enabled, ZDelete.log saves a record of recent commands, command durations, error messages and other pertinent data.</p> <p>ZDelete.log will not record names of destroyed file. It will record the number of files processed, and names of files that could not be processed due to errors.</p> <p>This log file can be helpful to confirm the approximate time that ZDelete Auto-Cleaner is run automatically or to help correct problems with automatic configuration.</p>
Close Internet Explorer when Auto-Cleaner starts	<p>Enable this option if you want to automatically close all instances of Internet Explorer when Auto-Cleaner is started.</p> <p>Enabling this option will eliminate access problems when cleaning Internet History or Temporary Internet Files. In some instances, popup windows (advertising) appear automatically, causing confusion in the folder when both creating and removing functions are happening at the same time.</p>

Command	Description
Security Level - number of passes	<p data-bbox="786 264 1433 338">When ZDelete destroys data, it overwrites with random data one time by default (one pass). You can specify the number of passes here.</p> <p data-bbox="786 359 1433 457">Base overwriting level includes a triple pass (once with zeros, once with 0xFFFF, and a third time with random character) as US Department of Defence recommends in clearing and sanitizing standard DoD 5220.22-M.</p> <p data-bbox="786 478 1433 527">By increasing the number of passes, the length of time for ZDelete process will be increased as well.</p>

3

ZDELETE AUTO-CLEANER AND DISK WIPER

This chapter gives an overview of **ZDelete Auto-Cleaner**.

ZDelete Auto-Cleaner Basics

ZDelete Auto-Cleaner is a security manager consisting of a personal item-removal profile, designed to restrict unwanted access to your private data. It allows you to define specific hard drive areas and clean them up on a regular basis. You can schedule periodical runs of Auto-Cleaner using standard Windows Scheduler (*see* [Scheduling ZDelete Auto-Cleaner](#)).

A personal item-removal and disk-wiping profile consists of a list of named system folders and custom items (files and patterns) and data residue you want to destroy. Use **ZDelete Wizard** steps 2 and 3 to create the profile and configure options.

The **ZDelete Auto-Cleaner** command automatically removes all items in your profile so that recovering these files becomes impossible. (*see* the explanation, later in this chapter).

ZDelete Auto-Cleaner appears as a toolbar button in **Microsoft Internet Explorer** (version 5.0 and above).

(i) Note: If your Internet Explorer toolbar has been customized, ZDelete Auto-Cleaner icon will not appear by default. It can be easily added from the list of available buttons in the Customize Toolbar dialog, or by clicking Reset in the same dialog screen.

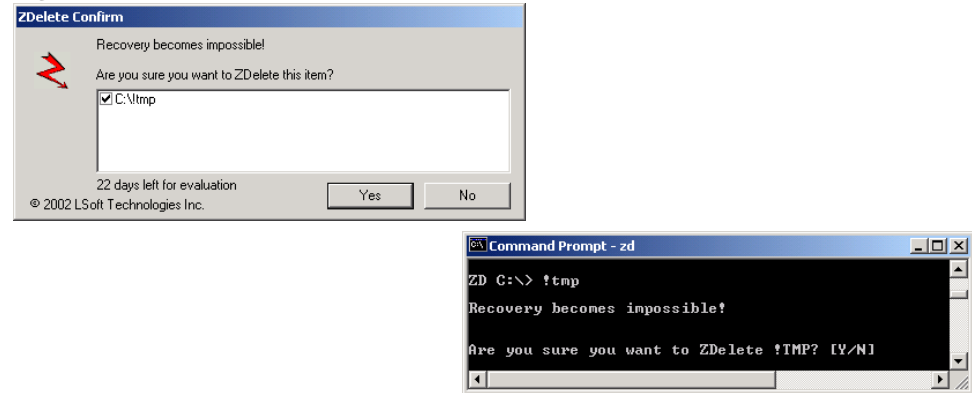
How To Use ZDelete Auto-Cleaner

Use the **ZDelete Wizard** to create a item-removal profile for **Auto-Cleaner**. Once created, there are several ways to run ZDelete Auto-Cleaner for cleaning up your profile:

- Choose menu item **ZDelete Auto-Cleaner** from the **Windows Start** menu
- Press **[Ctrl + Alt + Z]** key combination that is associated with shortcut in **Windows Start** menu
- Click **ZDelete Auto-Cleaner** toolbar icon in **Microsoft Internet Explorer** (version 5.0 and above)
- In Windows, double-click the **ZDELETE.EXE** file from the folder where you installed software
- Start the DOS console application **ZD.EXE** and type **CLEAR** in the command prompt

After **Auto-Cleaner** starts you will see a Windows graphical user interface (GUI) or a DOS console list of activities depending on the way you run the command. With the Windows interface, you can interact with the program (*see ZDelete for Windows Explorer Basics* in Chapter 5, or *ZDelete Console Application Basics* in Chapter 6 for more details).

Figure 3-1 Windows Interface and DOS Interface Screens



If you started Auto-Cleaner using the GUI, you will see the list of items, as defined in **ZDelete Wizard** (both Custom Items and System Folders), and you can edit the selection profile for this particular run before engaging the utility.

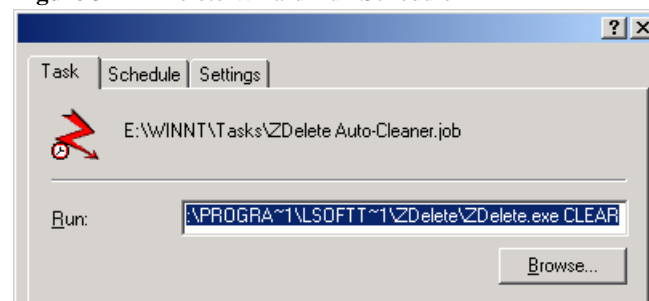
Scheduling ZDelete Auto-Cleaner

Use **Windows Scheduling** utility to program **ZDelete Auto-Cleaner** to run with or without user interaction.

Wizard Scheduling

- 1 Start **ZDelete Wizard** and advance the screens to Step 5 by clicking **Next**.
- 2 Click **Run Scheduler**. The **Schedule** screen appears.
- 3 In the **Schedule** tab, set start time and frequency if needed.
- 4 Click the **Task** tab. The path to ZDELETE.EXE appears automatically in the **Run** field, including the CLEAR parameter.

Figure 3-2 ZDelete Wizard Run Scheduler



- 5 When all parameters are set, click **OK** in this screen to complete Wizard Scheduling.

Windows Scheduling

- 1 In Windows **Control Panel**, double-click **Scheduled Tasks**.
- 2 Double-click **Add New Scheduled Task**.
- 3 Navigate to indicate the full path to **Auto-Cleaner's** program name (**ZD.EXE** or **ZDELETE.EXE**) in Job's Properties.
- 4 Optionally, specify the command line parameter **CLEAR**.
- 5 Specify the schedule indicating frequency and time.
- 6 In Windows NT and Windows 2000, specify **Run As** parameters.

For more details on scheduling configuring options, see **Using Task Scheduler** in Microsoft Windows Help.

Regarding the CLEAR Parameter

When scheduling, you can choose either *ZD.EXE* (the DOS console utility) or *ZDELETE.EXE* (the Windows Graphical User Interface utility) to start **Auto-Cleaner** with or without the parameter *CLEAR*.

The table below outlines the various options for *CLEAR*:

Table 3-1 Options for CLEAR Setting

Executable File	CLEAR Setting	Description
ZDELETE.EXE	With CLEAR	No user input required to execute command.
ZDELETE.EXE	Without CLEAR	Depends on the Confirmation setting (ZDelete Options screen) whether or not user confirms action.
ZD.EXE	With CLEAR	No user input required to execute command.
ZD.EXE	Without CLEAR	Depends on the Confirmation setting (ZDelete Options screen) whether or not user confirms action.

ZDelete Disk Wiper Basics

ZDelete Disk Wiper is a secure utility that allows you to wipe all free space on a drive making it impossible to recover previously deleted files.

Wiping the drive does NOT delete existing files on it, but makes it impossible to recover any previously deleted file, even when using data recovery tools. In other words, areas on the hard disk, that are not occupied by currently existing files, are cleared of data residue that may still exist.

If you have been using the Windows delete command, prior to installing **ZDelete**, your drives will contain data residue from previously deleted files. These files can easily be restored by someone using a data recovery utility. If you are dealing with secure or sensitive data, it is better to run **Disk Wiper** on all drives to secure deleted files. Once this process is complete, it will be impossible for anybody to restore any document deleted before you started using **ZDelete** and your privacy will be protected.

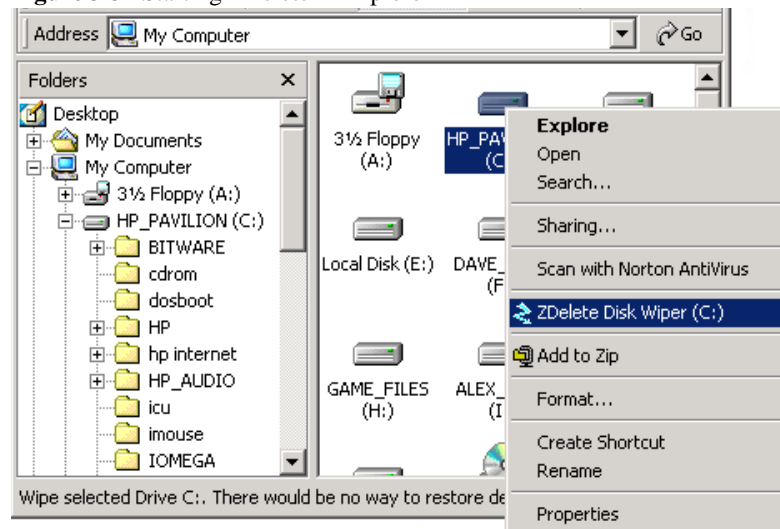
Use the **ZDelete Wizard** (Step 4) to define a set of drives to be wiped when you run **ZDelete Auto-Cleaner** either manually or as a scheduled task.

Using ZDelete Disk Wiper

Access **ZDelete Disk Wiper** for setup in one of several ways:

- In **Windows Explorer**, right-click the selected drive and execute **ZDelete Disk Wiper** command from the context menu (*see* figure below).

Figure 3-3 Starting ZDelete in Explorer



- In **Windows Explorer**, click a drive to select it. Execute **ZDelete Disk Wiper** command from the **File** drop-down menu.
- In a DOS console screen, start **ZDELETE.EXE** or **ZD.EXE** with a parameter indicating the selected drive with or without slash in a command line.

The example screens below, display the two methods available for command-line operation of ZDelete.

Figure 3-4 shows a DOS environment where the user has navigated to the ZDelete folder in order to issue the command to remove all files from drive f:.

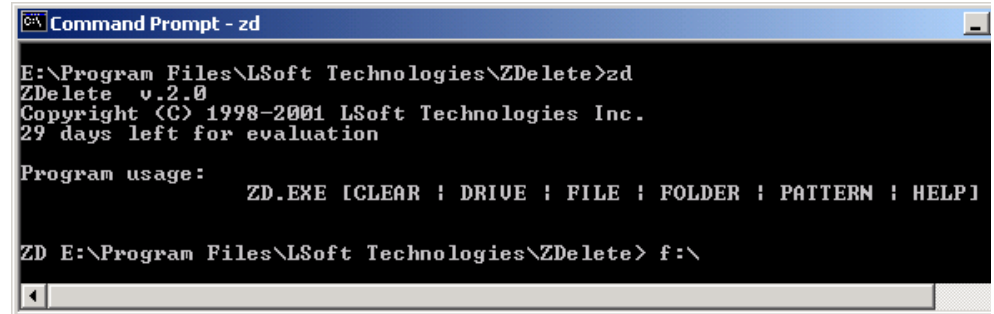
Figure 3-4 Example Command From DOS Console Screen

```
E:\Program Files\LSoft Technologies\ZDelete>zdelete f:\
```

(i) **Note:** If the path has been set to include the ZDelete folder, this command may be issued from any location within the system.

- From the **ZDelete Console Application**, enter the name of drive to be wiped. Include the backslash, similar to the last line of the figure below:

Figure 3-5 ZDelete Console Application



```

Command Prompt - zd
E:\Program Files\LSoft Technologies\ZDelete>zd
ZDelete v.2.0
Copyright (C) 1998-2001 LSoft Technologies Inc.
29 days left for evaluation

Program usage:
                ZD.EXE [CLEAR | DRIVE | FILE | FOLDER | PATTERN | HELP]

ZD E:\Program Files\LSoft Technologies\ZDelete> f:\

```

In the example above, the user started the ZDelete Console Application in DOS by first navigating to the ZDelete folder in order to issue the command. The DOS prompt changes to show the letters “ZD”.

After the standard confirmation dialog, the wiping process is started. A progress screen appears and you can watch the progress. Cancel the operation at any time with the [Esc] key.

After wiping the drive's empty spaces, **Disk Wiper** cleans the root directory to remove the names of deleted files.

Depending on the size of the hard drive, Disk Wiping may be a long process, however it gives you guaranteed results.

4

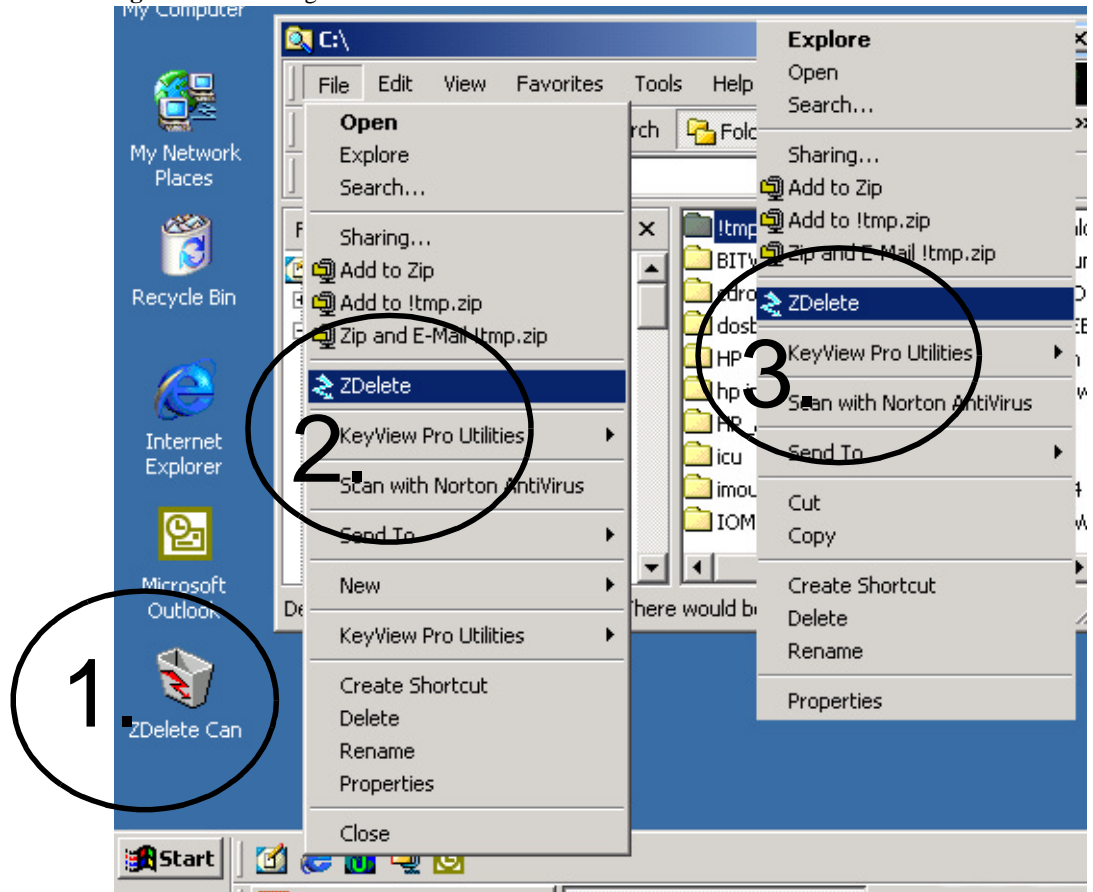
ZDELETE FOR WINDOWS EXPLORER AND DOS CONSOLE APPLICATION

This chapter gives an overview of **ZDelete for Windows Explorer**.

ZDelete for Windows Explorer Basics

ZDelete for Windows Explorer is a shell extension DLL that allows you to run ZDelete commands from within Windows Explorer. This option is convenient if you are accustomed to managing disk administration with the Windows Graphical User Interface.

Figure 4-1 Starting ZDelete from Windows



From Microsoft Windows, engage ZDelete using one of the following methods:

- 1 **ZDelete Can** icon on the Desktop and in Explorer's tree
 - Select the item or group of items you want to destroy

- Drag and drop them onto the ZDelete Can on your Desktop or in Explorer's tree, or ZDelete Can's view at the right side of the Explorer.
 - Fire animation will appear reminding you that these files will be permanently destroyed
- 2 **ZDelete** command item in the **File** drop-down menu from the command toolbar
 - 3 **ZDelete** command in a context menu when you right-click an item or group of items in Explorer

Using ZDelete for Windows Explorer

ZDelete for Windows Explorer allows you to ZDelete data in a file, folder or group of items from within Windows Explorer.

After engaging ZDelete, there will a confirmation screen asking to support your intention to destroy the data (this option may be turned off in ZDelete Wizard). The process will start if confirmed.

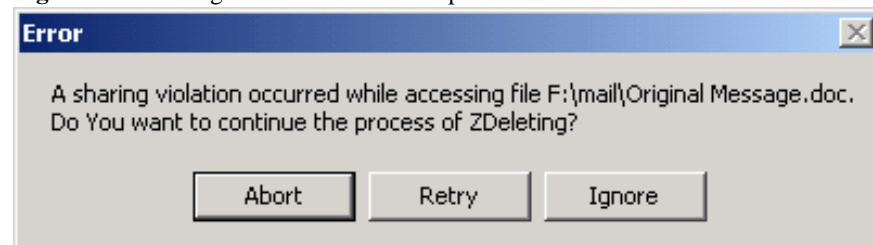
- (!) *Note: If several items are selected, the confirmation screen asks for confirmation only to start the process as defined, not to confirm each item within the definition.*

Before engaging ZDelete, you can change the selection of items by clearing or enabling checkmarks next to the item using mouse or keyboard.

If ZDelete is removing a folder, all contents of the folder including subfolders (if they exist) will be destroyed. Once all contents are destroyed, the folder itself is deleted.

If the program encounters errors while data ZDeleting is in progress (e.g., you do not have correct rights for access to a particular file, or this file is being used in another application) an error message will be displayed similar to the figure below:

Figure 4-2 Sharing Violation Error Example



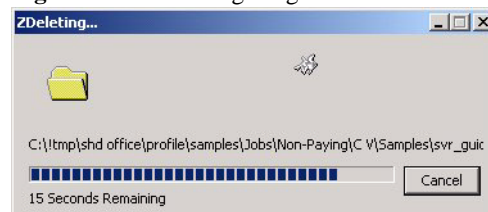
The three buttons on this screen show your options:

Table 4-1

Button Name	Description
Abort	Stop the process at this point
Retry	Fix the problem by manually closing the other program or inserting a diskette. Click Retry to ZDelete the file.
Ignore	The process will disregard the error message and will continue

While ZDeleting is in progress, a progress screen monitors activity. The process may be cancelled by clicking **Cancel** on the screen or **[Esc]** on the keyboard (This option may be turned off in **ZDelete Wizard**).

Figure 4-3 ZDeleting Progress



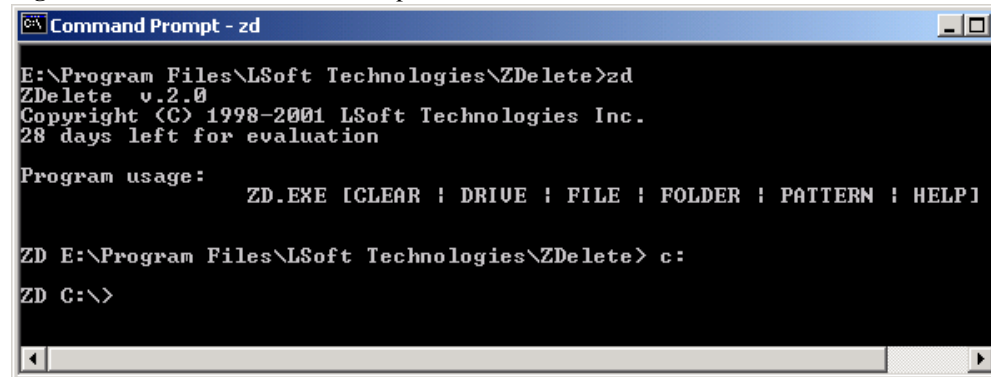
ZDelete Console Application Basics

ZDelete Console Application is an executable file named *ZD.EXE* and located in the folder where you installed ZDelete software.

This utility is designed for users who prefer command line disk administration functions. This utility may be copied into the Windows system folder in order to have access to it from every location in the system.

The utility may be run without a parameter to engage the command-prompt environment. Alternately, run it with a parameter and return directly to the DOS command console.

Figure 4-4 ZDelete Command Prompt Screen



**Supported
Commands**

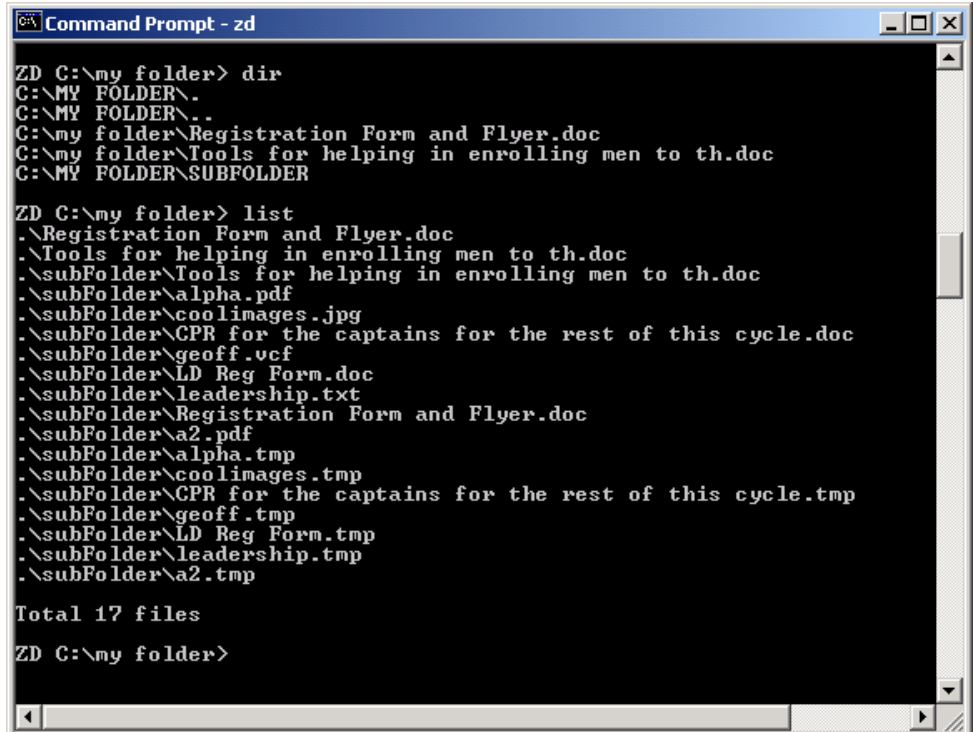
The following commands are supported in the ZDelete Console Application when running in command-prompt mode:

Table 4-2 Commands in ZDelete Console Application

Command	Description
/?	Displays help text on the console screen, including examples for drivename, foldername and pattern commands.
?	Same as /?, above.
cd	Change directory navigation command.
clear	Runs ZDelete Auto-Cleaner to destroy files in pre-defined profile. A list of files, folders and items to be deleted appears in the console screen along with a confirmation message (unless disabled).
dir	Lists contents of the current folder, showing files and subfolders by name. Operation of DIR is different from the DOS command. Asterisk (*) and question mark (?) searches do not work with this command. You cannot start from one hard drive and display the contents of another drive. You must first navigate to the drive and then issue the command.
drivename	Runs ZDelete to remove all contents of the named drive from the root through all folders, including all existing subfolders. All data on the drive will be destroyed completely without a chance of recovery. You will have a chance to confirm the action before it is engaged, unless the option has been turned off with ZDelete Wizard setup. Be aware that you will be asked to confirm the action only once for the drive itself, not for each file in the drive.
exit	Exit from ZDelete Console Application mode.
foldername	Runs ZDelete to remove all contents of the named folder including subfolders (if any exist). Data will be destroyed completely, and then the folder is removed as well. Be aware that you will be asked to confirm the action only once for the folder itself, not for each file in folder (unless option has been turned off with ZDelete Wizard setup).
help	Displays help text on the console screen, including examples for drivename, foldername and pattern commands.
list	Lists all files in current folder, including all files within subfolders (See difference between DIR and LIST in the figure below).
pattern	Runs ZDelete Auto-Cleaner to destroy files in pattern indicated by parameters. Use asterisk (*) and question mark (?) for universal search parameters.

The figure below shows the difference between DIR and LIST commands:

Figure 4-5 Showing the Difference Between DIR and LIST



```

Command Prompt - zd
ZD C:\my folder> dir
C:\MY FOLDER\.
C:\MY FOLDER\..
C:\my folder\Registration Form and Flyer.doc
C:\my folder\Tools for helping in enrolling men to th.doc
C:\MY FOLDER\SUBFOLDER

ZD C:\my folder> list
.\Registration Form and Flyer.doc
.\Tools for helping in enrolling men to th.doc
.\subFolder\Tools for helping in enrolling men to th.doc
.\subFolder\alpha.pdf
.\subFolder\coolimages.jpg
.\subFolder\CPR for the captains for the rest of this cycle.doc
.\subFolder\geoff.vcf
.\subFolder\LD Reg Form.doc
.\subFolder\leadership.txt
.\subFolder\Registration Form and Flyer.doc
.\subFolder\a2.pdf
.\subFolder\alpha.tmp
.\subFolder\coolimages.tmp
.\subFolder\CPR for the captains for the rest of this cycle.tmp
.\subFolder\geoff.tmp
.\subFolder\LD Reg Form.tmp
.\subFolder\leadership.tmp
.\subFolder\a2.tmp

Total 17 files
ZD C:\my folder>

```

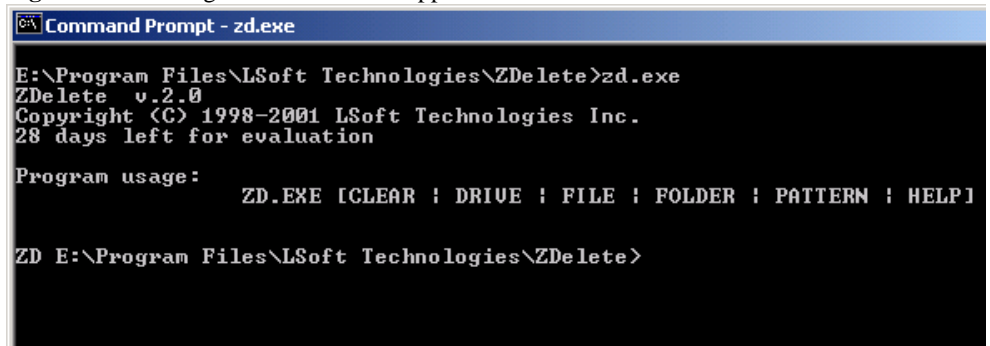
Using ZDelete Console Application

When running ZDelete Console Application, start from a DOS console by entering the command:

```
zd.exe
```

A copyright message will appear. If you are using the demonstration version of the utility, the number of valid days remaining will be displayed. A two-line reminder of ZDelete Console Application syntax is displayed. The prompt will change to indicate that the ZDelete Console Application has been engaged. (*See* figure below)

Figure 4-6 Starting ZDelete Console Application



```

Command Prompt - zd.exe
E:\Program Files\LSOFT Technologies\ZDelete>zd.exe
ZDelete v.2.0
Copyright (C) 1998-2001 LSOFT Technologies Inc.
28 days left for evaluation

Program usage:          ZD.EXE [CLEAR | DRIVE | FILE | FOLDER | PATTERN | HELP]

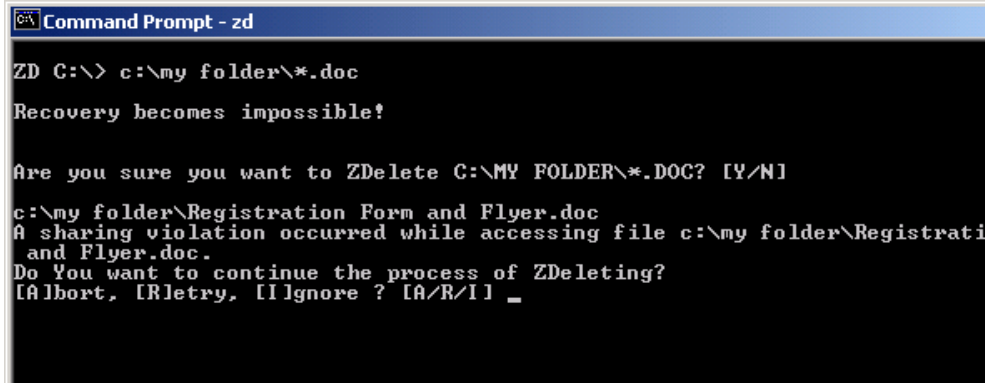
ZD E:\Program Files\LSOFT Technologies\ZDelete>

```

After entering the parameter, indicating file, folder or pattern to destroy, you will see a confirmation screen, unless this option has been turned off in **ZDelete Wizard**. The process starts after confirmation.

If there are some errors while data deleting is in progress (e.g. you do not have correct rights for access to a particular file, or this file is being used in another application) an error message will be displayed similar to the figure below:

Figure 4-7 Sharing Violation Error Message in ZDelete Console Application



The three options on this screen show your choices. Choose an option by pressing the first letter of the command.

Table 4-3 Sharing Violation Options

Option Name	Description
[A]bort	Stop the process at this point
[R]etry	Fix the problem by manually closing the other program or inserting a diskette. Enter [R]etry to ZDelete the file.
[I]gnore	The process will disregard the error message and will continue

While ZDeleting is in progress, a progress screen monitors activity. The process may be cancelled by clicking **Cancel** on the screen or **[Esc]** on the keyboard (this option may be turned off in **ZDelete Wizard**).

5

ZDELETE CONSOLE APPLICATION

This chapter gives an overview of **ZDelete Console Application**.

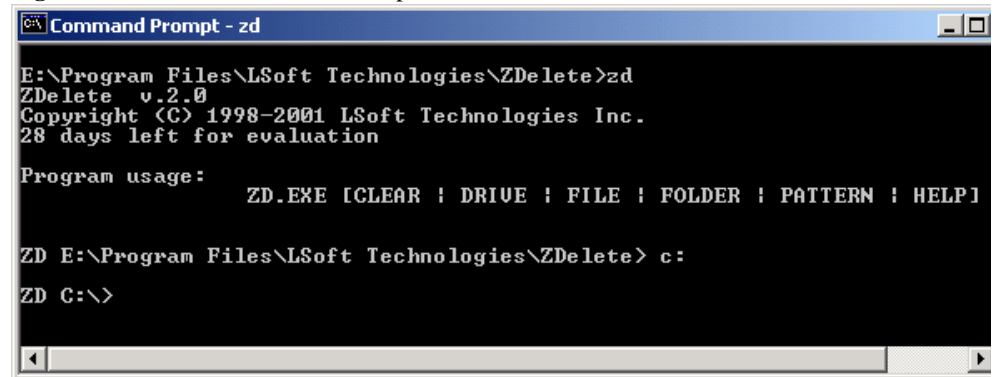
ZDelete Console Application Basics

ZDelete Console Application is an executable file named *ZD.EXE* and located in the folder where you installed ZDelete software.

This utility is designed for users who prefer command line disk administration functions. This utility may be copied into the Windows system folder in order to have access to it from every location in the system.

The utility may be run without a parameter to engage the command-prompt environment. Alternately, run it with a parameter and return directly to the DOS command console.

Figure 5-1 ZDelete Command Prompt Screen



```
Command Prompt - zd
E:\Program Files\LSoft Technologies\ZDelete>zd
ZDelete v.2.0
Copyright (C) 1998-2001 LSoft Technologies Inc.
28 days left for evaluation

Program usage:
                ZD.EXE [CLEAR | DRIVE | FILE | FOLDER | PATTERN | HELP]

ZD E:\Program Files\LSoft Technologies\ZDelete> c:
ZD C:\>
```

**Supported
Commands**

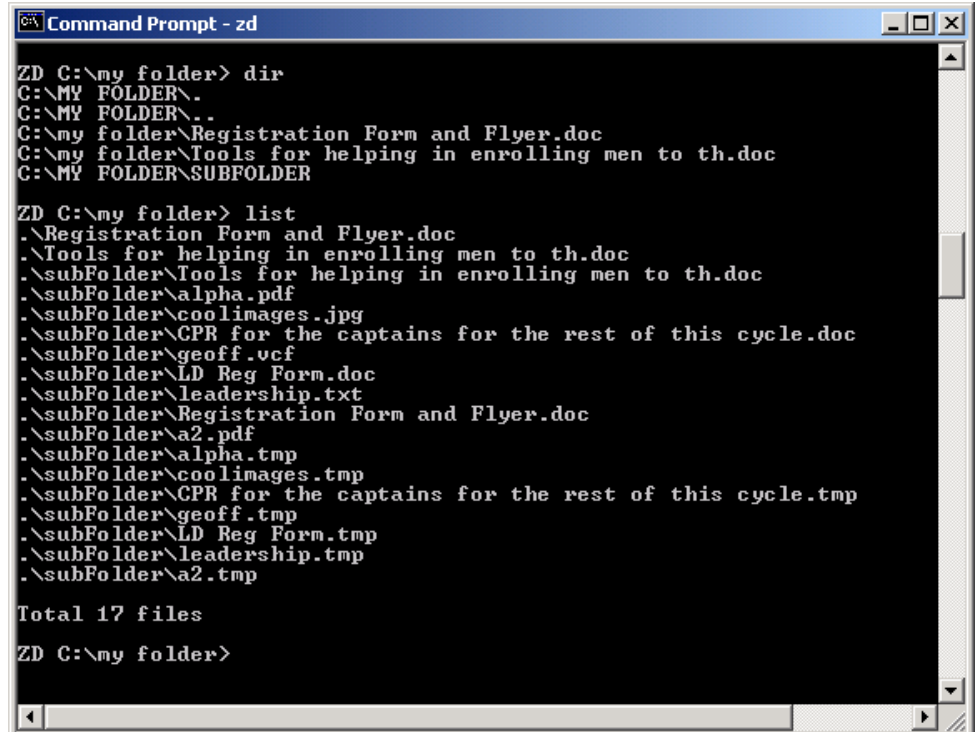
The following commands are supported in the ZDelete Console Application when running in command-prompt mode:

Table 5-1 Commands in ZDelete Console Application

Command	Description
/?	Displays help text on the console screen, including examples for drivename, foldername and pattern commands.
?	Displays help text on the console screen, including examples for drivename, foldername and pattern commands.
cd	Change directory navigation command.
clear	Runs ZDelete Auto-Cleaner to destroy files in pre-defined profile. A list of files, folders and items to be deleted appears in the console screen along with a confirmation message (unless disabled).
dir	Lists contents of the current folder, showing files and subfolders by name. Operation of DIR is different from the DOS command. Asterisk (*) and question mark (?) searches do not work with this command. You cannot start from one hard drive and display the contents of another drive. You must first navigate to the drive and then issue the command.
drivename	Runs ZDelete to remove all contents of the named drive from the root through all folders, including all existing subfolders. All data on the drive will be destroyed completely without a chance of recovery. Unless the options has been turned off with ZDelete Wizard , you will have a chance to confirm the action before it is engaged.
exit	Exit from ZDelete Console Application mode.
foldername	Runs ZDelete to remove all contents of the named folder including subfolders (if any exist). Data will be destroyed completely, and then the folder is removed as well. Be aware that if you indicate a folder by name, you will be asked to confirm the action only once for the folder itself, not for each file in folder (unless option has been turned off with ZDelete Wizard setup).
help	Displays help text on the console screen, including examples for drivename, foldername and pattern commands.
list	Lists all files in current folder, including all files within subfolders (See difference between DIR and LIST in the figure below).
pattern	Runs ZDelete Auto-Cleaner to destroy files in pattern indicated by parameters. Use asterisk (*) and question mark (?) for universal search parameters.

The figure below shows the difference between DIR and LIST commands:

Figure 5-2 Showing the Difference Between DIR and LIST



```

Command Prompt - zd
ZD C:\my folder> dir
C:\MY FOLDER\.
C:\MY FOLDER\..
C:\my folder\Registration Form and Flyer.doc
C:\my folder\Tools for helping in enrolling men to th.doc
C:\MY FOLDER\SUBFOLDER

ZD C:\my folder> list
.\Registration Form and Flyer.doc
.\Tools for helping in enrolling men to th.doc
.\subFolder\Tools for helping in enrolling men to th.doc
.\subFolder\alpha.pdf
.\subFolder\coolimages.jpg
.\subFolder\CPR for the captains for the rest of this cycle.doc
.\subFolder\geoff.ucf
.\subFolder\LD Reg Form.doc
.\subFolder\leadership.txt
.\subFolder\Registration Form and Flyer.doc
.\subFolder\a2.pdf
.\subFolder\alpha.tmp
.\subFolder\coolimages.tmp
.\subFolder\CPR for the captains for the rest of this cycle.tmp
.\subFolder\geoff.tmp
.\subFolder\LD Reg Form.tmp
.\subFolder\leadership.tmp
.\subFolder\a2.tmp

Total 17 files
ZD C:\my folder>

```

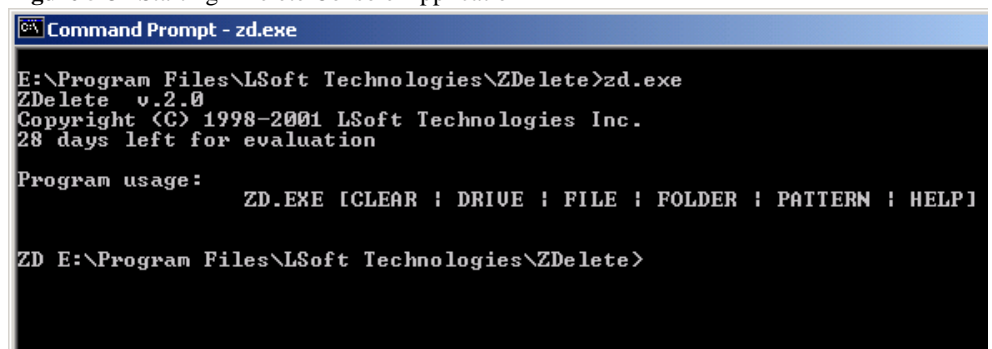
Using ZDelete Console Application

When running ZDelete Console Application, start from a DOS console by entering the command:

```
zd.exe
```

A copyright message will appear. If you are using the demonstration version of the utility, the number of valid days remaining will be displayed. A two-line reminder of ZDelete Console Application syntax is displayed. The prompt will change to indicate that the ZDelete Console Application has been engaged. (*See* figure below)

Figure 5-3 Starting ZDelete Console Application



```

Command Prompt - zd.exe
E:\Program Files\LSoft Technologies\ZDelete>zd.exe
ZDelete v.2.0
Copyright (C) 1998-2001 LSoft Technologies Inc.
28 days left for evaluation

Program usage:
                ZD.EXE [CLEAR | DRIVE | FILE | FOLDER | PATTERN | HELP]

ZD E:\Program Files\LSoft Technologies\ZDelete>

```

After entering the parameter, indicating file, folder or pattern to destroy, you will see a confirmation screen, unless this option has been turned off in **ZDelete Wizard**. The process starts after confirmation.

If there are some errors while data deleting is in progress (e.g. you do not have correct rights for access to a particular file, or this file is being used in another application) an error message will be displayed similar to the figure below:

Figure 5-4 Sharing Violation Error Message in ZDelete Console Application

```

C:\> ZD C:\> c:\my folder\*.doc
Recovery becomes impossible!

Are you sure you want to ZDelete C:\MY FOLDER\*.DOC? [Y/N]
c:\my folder\Registration Form and Flyer.doc
A sharing violation occurred while accessing file c:\my folder\Registration
and Flyer.doc.
Do You want to continue the process of ZDeleting?
[A]bort, [R]etry, [I]gnore ? [A/R/I] _

```

The three options on this screen show your choices:

Table 5-2 Sharing Violation Options

Option Name	Description
Abort	Stop the process at this point
Retry	Fix the problem by manually closing the other program or inserting a diskette. Enter [R]etry to ZDelete the file.
Ignore	The process will disregard the error message and will continue

While ZDeleting is in progress, a progress screen monitors activity. The process may be cancelled by clicking **Cancel** on the screen or **[Esc]** on the keyboard (This option may be turned off in **ZDelete Wizard**).

6

LICENSING ZDELETE

This chapter describes the ZDelete license.

Licensing Policy

The free 30-day evaluation version of the program is fully functional and gives you complete protection.

When you start using the program, you can see how many days are remaining for the evaluation period every time the confirmation screen appears.

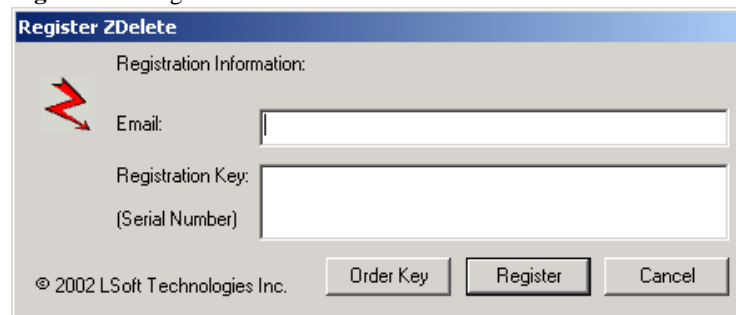
After the evaluation period has expired, the program becomes un-usable.

When you purchase a **Product Registration Key** (or **Serial Number**), complete the registration in one of two ways:

Windows Licensing Method

- 1 From Windows Start, click **Programs**. Click **Register ZDelete** from the **ZDelete** menu. The **Register ZDelete** screen appears.

Figure 6-1 Register ZDelete



- (i) **Note:** If you manually dial your Internet service provider in order to navigate to a Web page, do so before continuing.

Enter your Email address and click **Order Key**. You will be taken to the **Order ZDelete** Website screen. Enter your contact information, order quantity and credit card number. Your order will be sent to our offices and you will receive the **Product Key** as an Email attachment.

Registration Dialog Licensing Method

- 1 After the 30-day trial period, if you try to start ZDelete, a Registration dialog screen appears.
- 2 Enter your **Email** and **Registration Key** (Serial Number) in the registration dialog and follow instructions on the screen.

7

ZDELETE FREQUENTLY ASKED QUESTIONS

This chapter covers FAQ about ZDelete.

Q: What is the purpose of ZDelete?

A: To prevent others to access your private data you want to delete, i.e. stealing your information. ZDelete is your personal security manager.

Q: Can I schedule ZDelete to run periodically and clean up my hard drives?

A: **ZDelete Auto-Cleaner** can be scheduled for cleaning up your hard drives automatically (without user's interaction) using standard MS Windows **Task Scheduler** (see [Scheduling ZDelete Auto-Cleaner](#) in Chapter 3).

Another way to create a scheduling profile is to start the **ZDelete Wizard** and go to **Step 4**. In this screen, click the **Run Scheduler** button.

Q: How easy is it to access ZDelete functions?

A: ZDelete can be engaged a number of different ways. From your keyboard, you can use the **[Ctrl+Alt+Z]** key combination. There are shortcuts in the Windows **Start** menu and on your desktop to run **ZDelete Auto-Cleaner**.

Here are some other ways to run ZDelete:

- From **MS Explorer** right-click a file or a drive (or a selected group of files and folders). From the context menu choose **ZDelete**, **ZDelete Auto-Cleaner**, or **ZDelete Disk Wiper**.
- From the **MS-DOS** prompt (in Windows 95/98) or **Command Prompt** (Windows NT/2000), start **Console Application ZD.EXE** with or without parameters.

Q: Which Operating Systems and File Systems are best to use with ZDelete?

A: ZDelete has been successfully tested with the following operating systems and file systems:

- 32-bit Windows operating systems:
 - Windows 95/98/ME and Windows NT3.51/4.0/2000/XP
- File Systems:
 - FAT12, FAT16, FAT32, NTFS.

Q: What is the difference between ZDelete for Windows Explorer and ZDelete Console Application?

A: ZDelete for Windows Explorer is designed for those who like to use a **Graphical User Interface**. **ZDelete Console Application** is for those who prefer a command-line environment.

Q: Do I need special OS permissions to install and use the software?

A: To install software on **Windows 95/98/ME** you do not need special permission.

To install software on **Windows NT/2000** you need permission to install applications (i.e. as an Administrator or in the Power Users group).

To use software you do not need any special permissions, unless the file is located on an NTFS partition. You must have permissions to “write” to the particular file in order to destroy it (you can not destroy the data if you do not have access to it).

Q: If I use Netscape Navigator and Internet Explorer, can I use ZDelete to clean-up temporary files in Cache and Cookies?

A: Yes, **ZDelete Auto-Cleaner** can clean Temporary Internet Files, Cookies, History, Favorites, and whatever else you specify in **ZDelete Wizard**. Netscape Navigator users might experience some limitations (see **Attention to Netscape Navigator Users** in [Chapter 2](#)).

Q: After I finish using a hard drive or a floppy, how can I make sure that nothing can be restored?

A: ZDelete and **ZDelete Disk Wiper** both serve to this goal. Follow the steps below to remove all data:

- 1 Run **ZDelete** for the documents and folders you want to destroy.
- 2 Run **ZDelete Disk Wiper** for the floppy drive or all logical drives on a hard drive, and it cleans up all free space. Nothing from previously deleted temporary files and folders will be recoverable.
- 3 The next person to use your floppy or hard drive will see only the files and folders you leave untouched by the ZDelete process.

Q: Does ZDelete Software comply with any industry standards for data removal?

A: Yes, ZDelete complies with the US DoD 5220.22-M / NISPOM 8-306 standard for cleaning and sanitizing.

For data destruction it follows the Department of Defense recommendation

“Overwrite all addressable locations with a character, its complement, then a random character and verify”.

Moreover, you can specify the number of passes yourself (one pass by default), thus the base operation can be repeated as many times as you need.

Q: Is there a way to hide the ZDelete Can located on my Desktop?

A: It is simple to change the appearance of your Desktop. In the **ZDelete Wizard**, clear the related checkbox in **Step 5**.

LSoft Technologies Inc.

LSoft Technologies is a software development company designing disk utilities related to the recovery of lost data and online privacy. Unique technologies allow our solutions to be easily integrated with operating system and network environments, creating powerful and flexible tools for computer management.

Contact Information

P.O. Box 13527
3221 Derry Road West #3
Mississauga, Ontario
Canada L5N 8G5
Phone : (416) 333-5422

Customer Service: sales@ZDelete.com

Technical Support: support@ZDelete.com

<http://www.ZDelete.com>

©2002

LSoft Technologies Inc.
All rights reserved worldwide